



### Study Summary

We are currently recruiting healthy participants for our study of biological measurements that may be related to schizophrenia, schizoaffective disorder, and bipolar disorder.

We will also examine whether these illnesses and biological measurements may be related to genetics.

#### **Principal Investigators:**

**Elliot Gershon, M.D.**

Foundations Fund Professor of Psychiatry and Human Genetics

**Sarah Keedy, Ph.D.**

Assistant Director, Cognition-Emotion Neuroscience Laboratory  
Assistant Professor of Psychiatry and Behavioral Neuroscience

*The Cognition-Emotion Neuroscience Laboratory is conducting research to better understand, diagnose and treat:*

**SCHIZOPHRENIA  
SCHIZOAFFECTIVE  
BIPOLAR DISORDER**

For further information please contact us!

**773-834-0222**

OR

**773-834-4792**

<http://cnpru.bsd.uchicago.edu/BSNIP.html>

OR

<http://b-snip.org/>

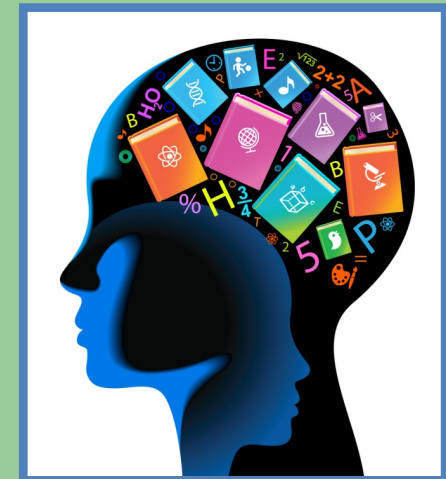


**University of Chicago**

**5841 S Maryland Ave.  
L-460  
Chicago, IL 60637  
CENSL@bsd.uchicago.edu**

## Are You A Healthy Volunteer?

Participate in  
Research at the  
University of Chicago!



**University of Chicago**

**Tel: 773-834-0222**

## You may be able to participate if you:

- Are 18-60 years old
- Have no current or past history of:
  - Psychiatric Illnesses
  - Neurological disorders
- Have no current problems with drugs or alcohol
- Not pregnant



## STUDY PROCEDURES

- Clinical Interview

*We will talk with you about your thoughts, moods, behavior, and medical history*

- Cognitive testing

*Tests of attention, memory, and problem solving*

- Brain imaging

*Using safe and non-invasive methods*

- Eye movement testing

*We will record your eye movements as you view simple images on a screen*

- Questionnaires

- Blood draw OR saliva swab

*Collected for DNA analysis. **Please note that if you decline to provide a DNA sample, you cannot take part in this study.***

## TIME

- Procedures are typically completed over 3 study visits
- Visit 1 (2-4 hours), Visits 2 & 3 (3-5 hours each)

## PAYMENTS

- Participants will be paid for each procedure completed, up to a maximum of \$360 including travel costs

## CONTACT

**773-834-0222**

OR

**773-834-4792**

**CENSL@bsd.uchicago.edu**

*We welcome referrals, comments, questions, and requests for information.*